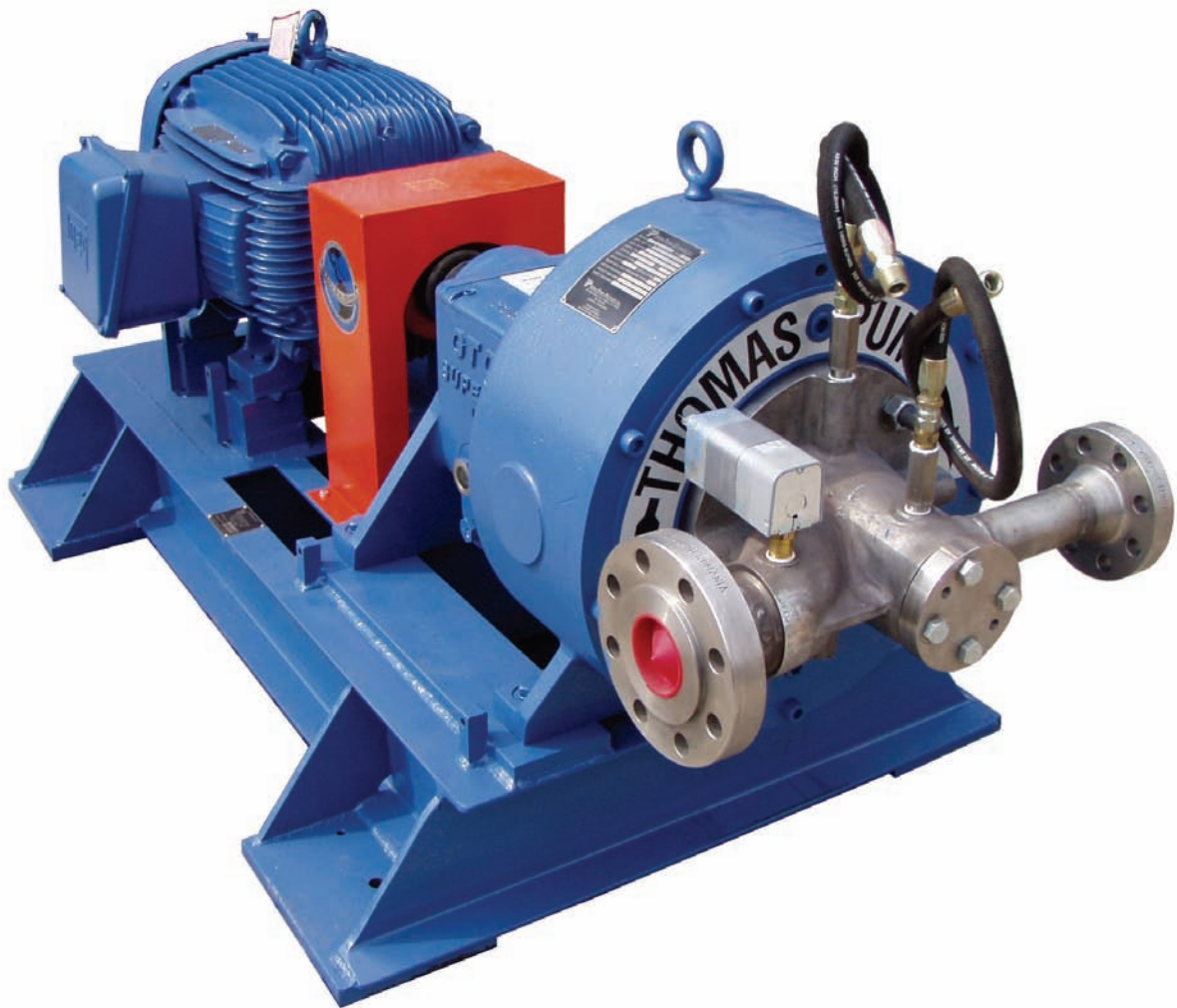




THOMAS PUMP & MACHINERY, INC.

GTO SUPERDUTY™

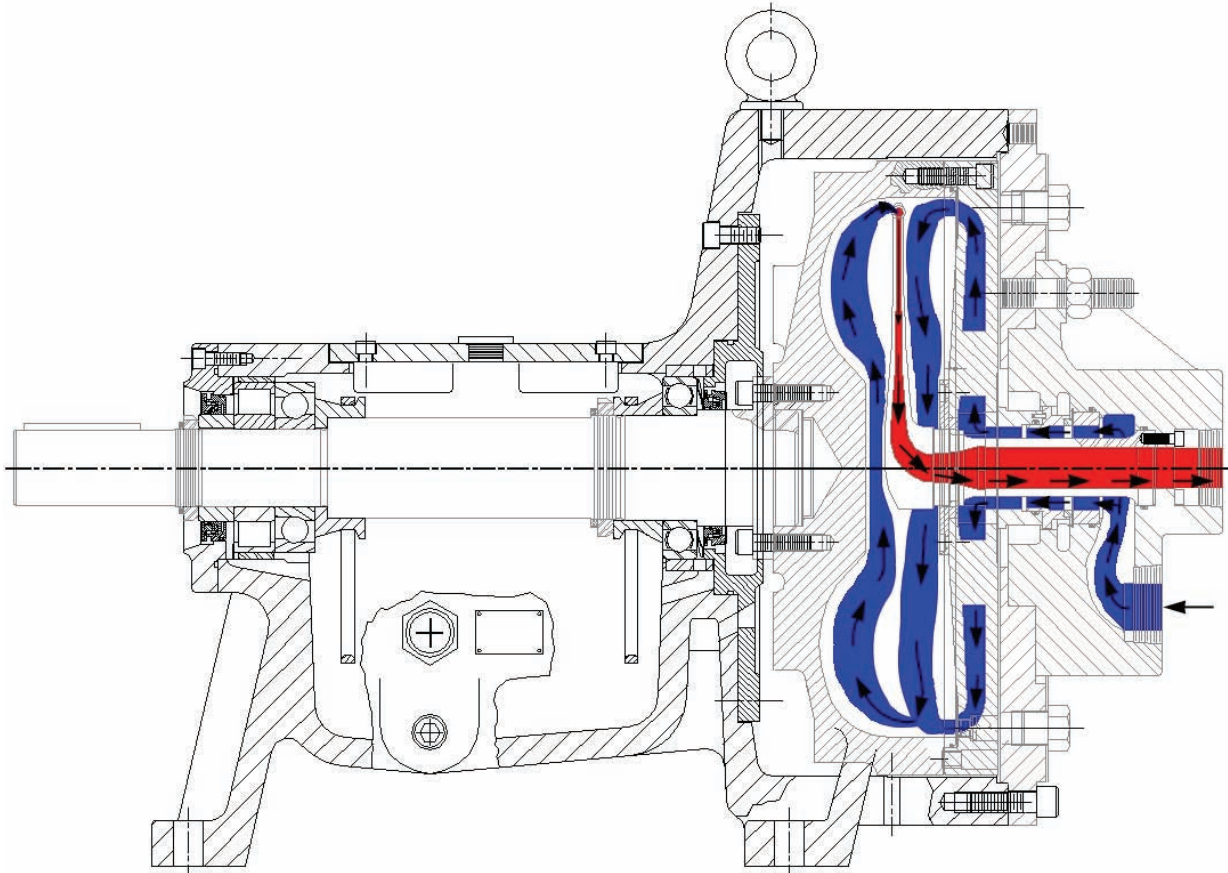


GTO

SUPERDUTY™

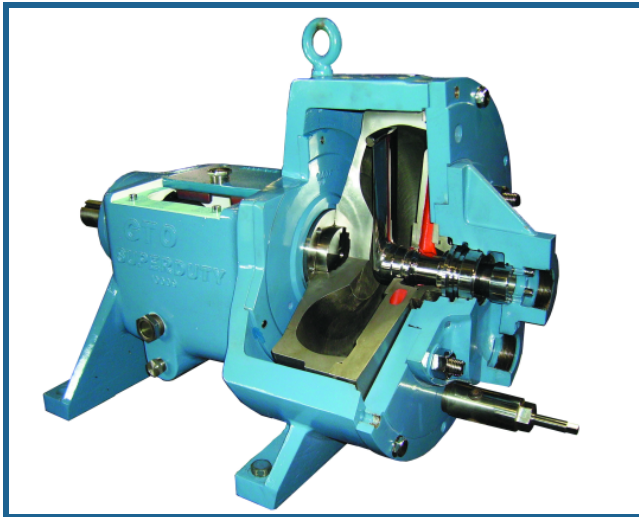
The GTO SUPERDUTY™ designed for critical applications, is the most reliable high-pressure pump in the marketplace.

With capacities to 400 GPM and pressures to 1600 PSI the GTO SUPERDUTY™ offers the most stable centrifugal pump available through the full range of the performance curve. High Pressure applications that demand variable flows while maintaining a stable operating condition are a perfect match. Applications such as sanitation cleaning, paper mill showers, truck-cleaning facilities, brine injection and waste disposal are a few examples. Where conventional centrifugal and piston pumps have a narrow window of operation the GTO SUPERDUTY™ can operate anywhere on the curve, and the result is years of trouble free service regardless of how tough the application.



GTO

SUPERDUTY™



Features

- **Inpro® Labyrinth Oil seals.** High quality oil seals keep outside environmental contaminants from entering the lubrication media, greatly extending bearing life. Ours is a standard feature.
- **Large Sight Glass.** Bull's-eye sight glass 1-1/4" simplifies oil level and oil condition monitoring, that is critical to bearing life.
- **Powder Coated Oil Sump Lining.** Fusion Bonded Polyester process-TGIC designed to remove impurities in the castings and applied to the interior surface of the power frame oil sump that provides an impenetrable barrier between the iron frame and the oil, enhancing the long-term quality and cleanliness of the lubricating oil. This process meets U.S. Department of Defense Mil Spec C-24712A for vibrations and chemical resistance.
- **Magnetic Drain Plug.** A safety feature designed to magnetically collect damaging metallic contaminants away from the bearings.
- **Heavy-Duty Shaft Bearings.** X-Life Precision Bearings have extremely high reliability and extend bearing life with added benefits of smooth running, noise reduction, and reduced energy consumption.
- **Monitoring Locations.** Power frame has bearing monitor feature to allow RTD insertion for bearing temperature monitoring and optional areas can be added for vibration monitoring.
- **Powder Coated Power Frame.** Fusion Bonded Polyester process-TGIC designed to remove impurities in the castings and applied to the entire surface of the power frame. This process allows casing to be chemical resistance and will not blister, soften, lose bond or discolor. Our Powder Coating Process resists salt spray, weathering, and humidity.

THOMAS PUMP & MACHINERY, INC.



Symbols Of Excellence

**For Your Application Needs Of
Pumps, Parts, Service And Complete Systems,
Call**

Thomas Pump & Machinery, Inc.
120 Industrial Dr.
Slidell, LA 70460
Phone: 985-649-3000
Fax: 985-649-4300

Thomas Pump & Machinery, Inc.
105 Enterprise St.
Carrollton, GA 30117
Phone: 770-908-8000
Fax: 770-908-8008